

Panamakanal (V2.7)

Flight created on 20.05.2020 (01.10.2023 V2.5 English)
(Amended 31.05.2024, translation error corrected.)

Estimated flight time 1h15min

Difficulty level medium

Mission: Fly a tour along the Panama Canal.

Introduction

This time your boss wants you to fly two passengers along the Panama Canal.

They are newly graduated doctors who have booked this tour to celebrate their successful graduation.

A co-pilot will accompany you and take care of the passengers.

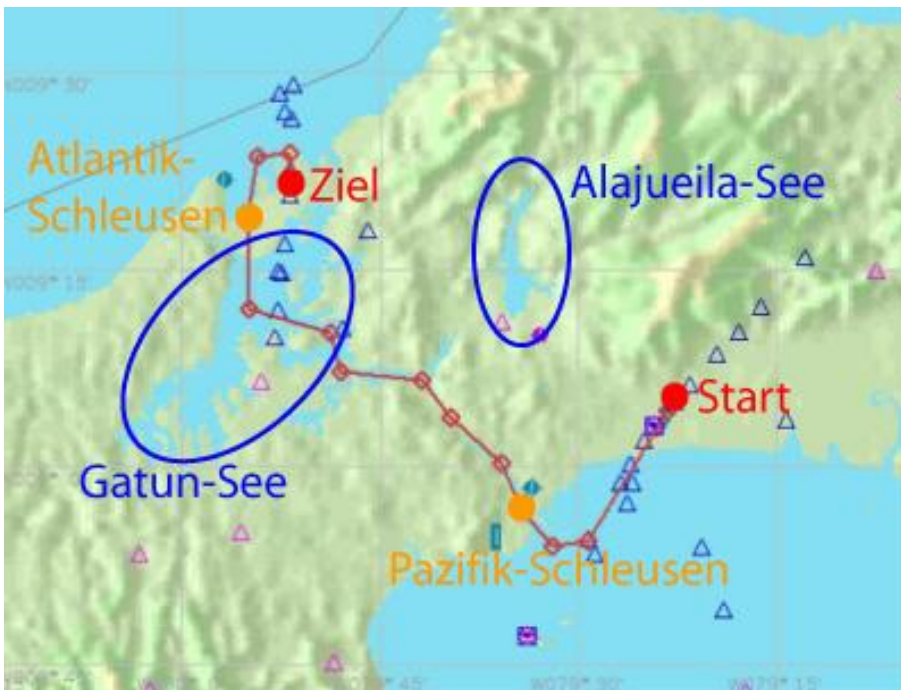
You wonder a bit, because usually the boss often wants you to deliver some packages (grass, or weed).

And what's with the co-pilot? Two pilots means 2x pay, the boss always looks at the cost after all.

Anyway, probably the doctors pay so well that it's worth it for the boss.

Start

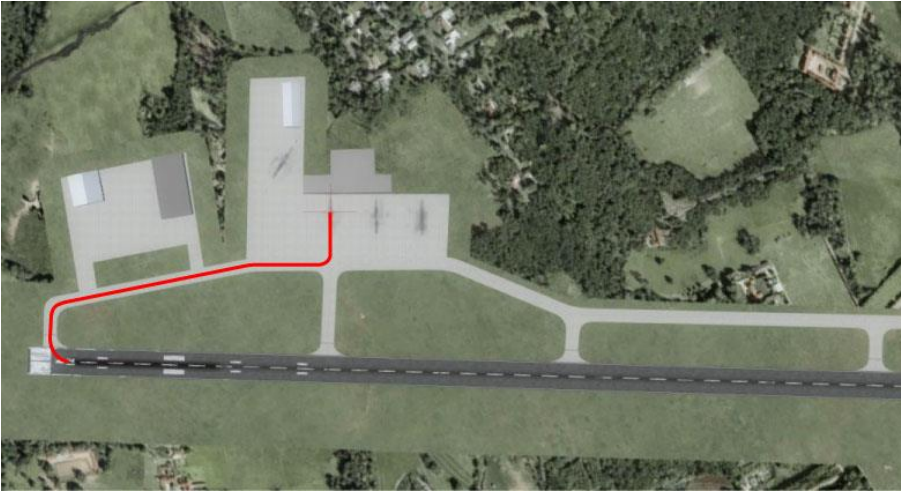
You fly from the Pacific Ocean, along the Panama Canal, to the Atlantic Ocean.



You are in the parking area of Tocumen Intl Airport (MPTO).

Taxi to runway 21 and follow the co-pilot's instructions.

The co-pilot will guide you to the destination airport Enrique Adolfo Jimenez (MPEJ).



Unexpected things will happen on the way, let yourself be surprised!

Notes

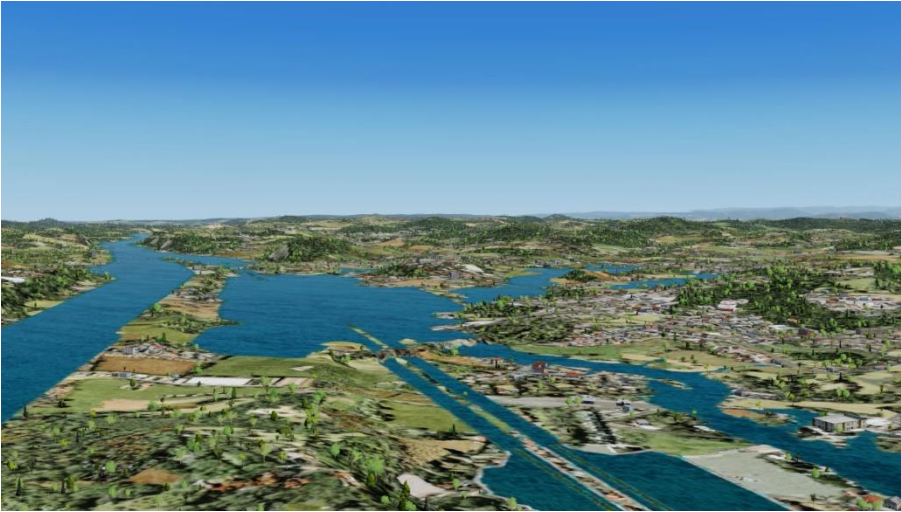
This flight is P3d V4/V5 compatible.

Who owns both versions can make quasi a time travel:

P3dV4: Pacific Locks since 1914 construction.



P3dV5: Pacific locks after 2016

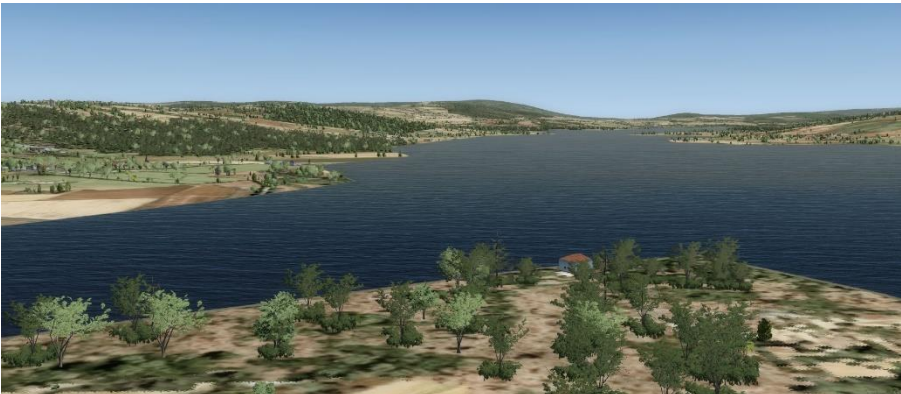


In 2016, additional locks were built to increase the capacity of the canal.

In P3dV5 the old locks (visible since FSX) have been removed. Now these locks are no longer visible, the height difference of the water was simply realized with a rock cliff.

By the way: the graphical changes between P3dV4/5 are well visible everywhere, here is just one example:

Lake Alajuei in P3dV4



Lake Alajuei in P3dV5



I hope you enjoyed this flight, if so please give feedback to p3d@andi20.ch . Also send error messages (spelling mistakes, wrong information, etc.) to p3d@andi20.ch, I appreciate any feedback.