

GreenlandSpecial (V1.6)

Flight created on 28.06.2020 (02.10.2023 V1.5 English)
(Amended on 01.01.2024, V1.6: Many translation errors corrected.)

Estimated flight time 15 - 30min.

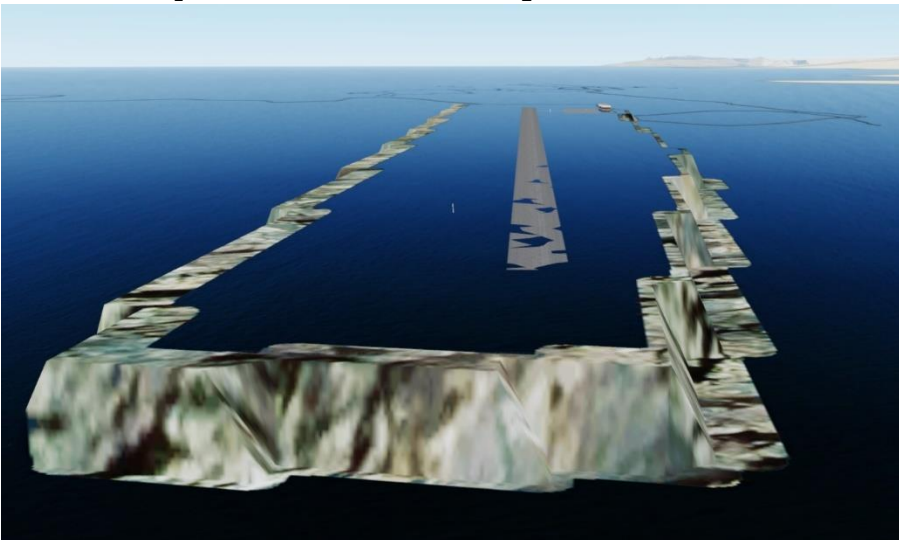
Difficulty: Hard

Mission: Take off, land on one of the "water streets", take off again and land at the airport.

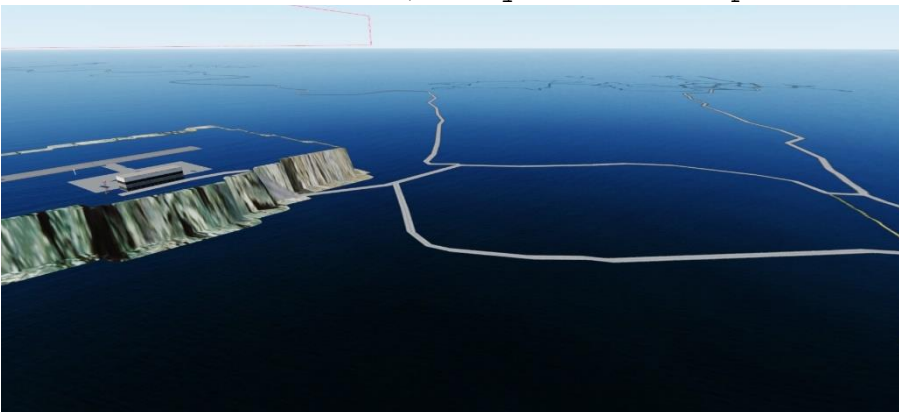
Introduction

While rebuilding the existing/old missions from P3dV4 to P3dV5, I noticed in the mission "Me-NY3" that the airport Kulusuk is shown very special:

- The airport is elevated, yet in the water.



- All around is water, only roads are present.



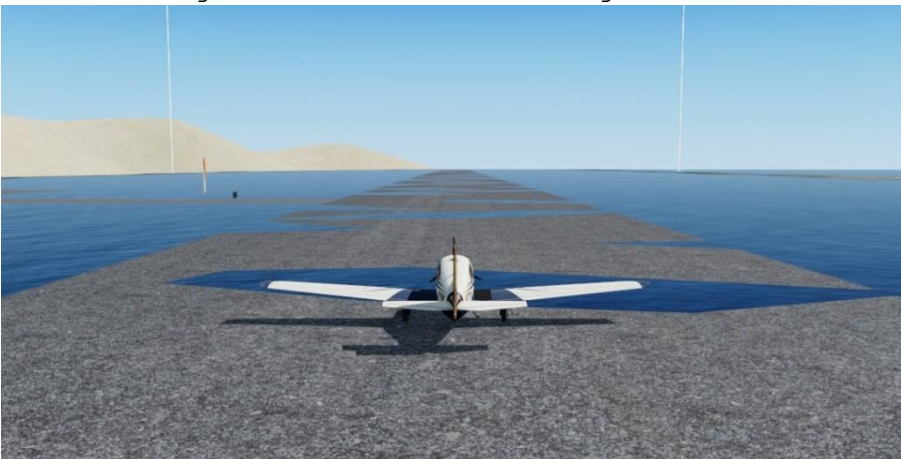
-In the overview it looks like this:



I just had to make a little mission out of that!

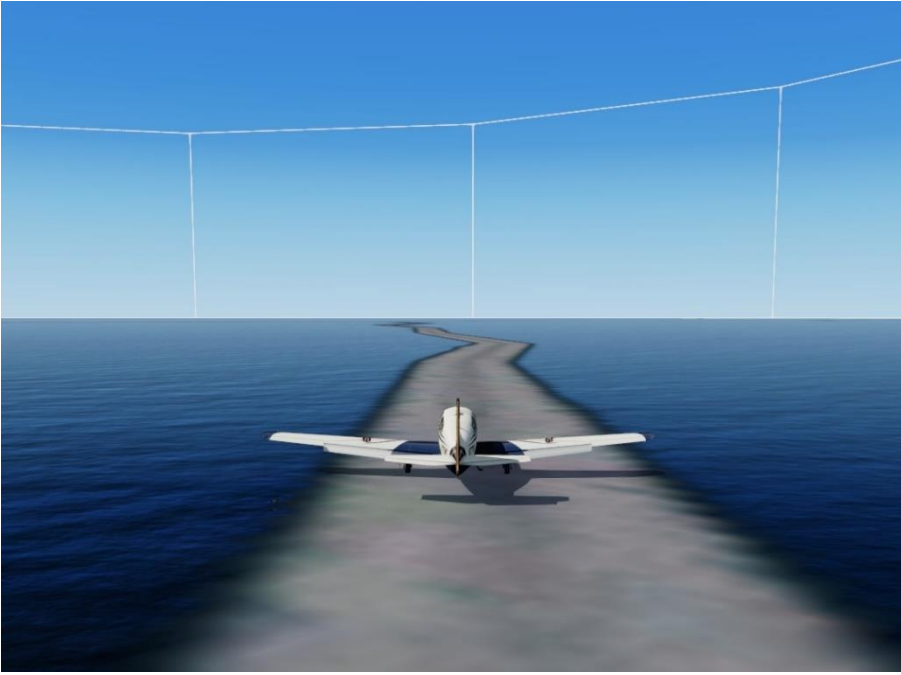
Start

You're standing on runway 11, the airport is probably slightly flooded right now because of high water.



Take off, climb to suitable altitude, retract flaps and landing gear, then look for a landing opportunity on one of the roads.

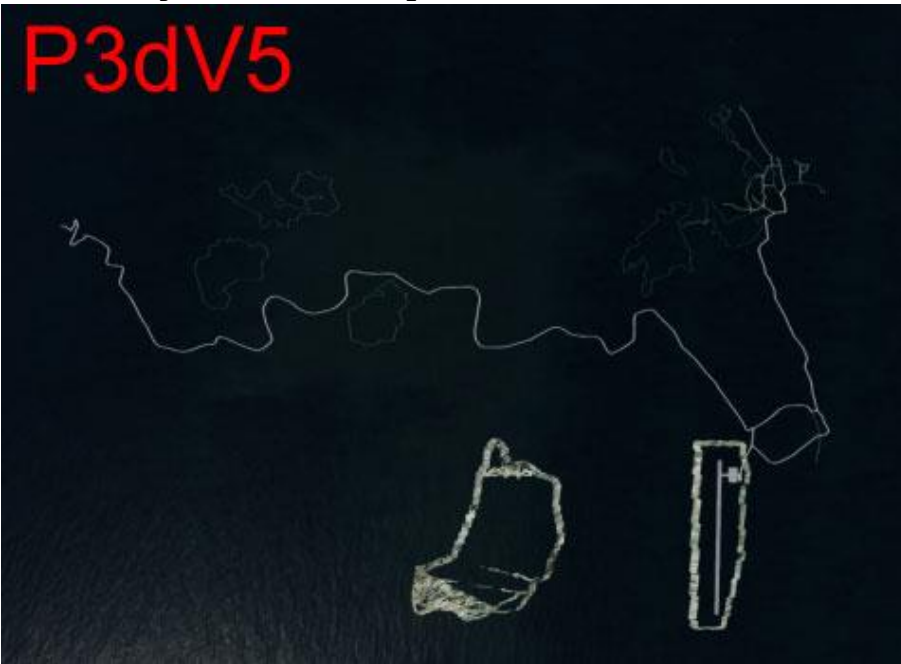
After the difficult landing:



Take off again and fly back to the airport.

Note

This flight works only with P3dV5.





In P3dV4 there is no water-airport, or water-roads, but a pretty island.

I hope you enjoyed this flight, if so please give feedback to p3d@andi20.ch . Also send error messages (spelling mistakes, wrong information, etc.) to p3d@andi20.ch, I appreciate any feedback.