

Flight from Los Angeles International to Catalina (in SubLogic's Flight Simulator 2 for the C64)

- Prepare flight (launch the flight simulator and press E to switch to the editor, then):

AUTO-COORDINATION=0 | REALITY MODE=1 | NORTH POSITION=15371 | EAST POSITION=5800 | ALTITUDE=0
HEADING=74 | Time 8:00 a.m.

Exit the editor and check the position:
(If the heading is incorrect, go back into the editor and re-enter 74.)

Incorrect heading

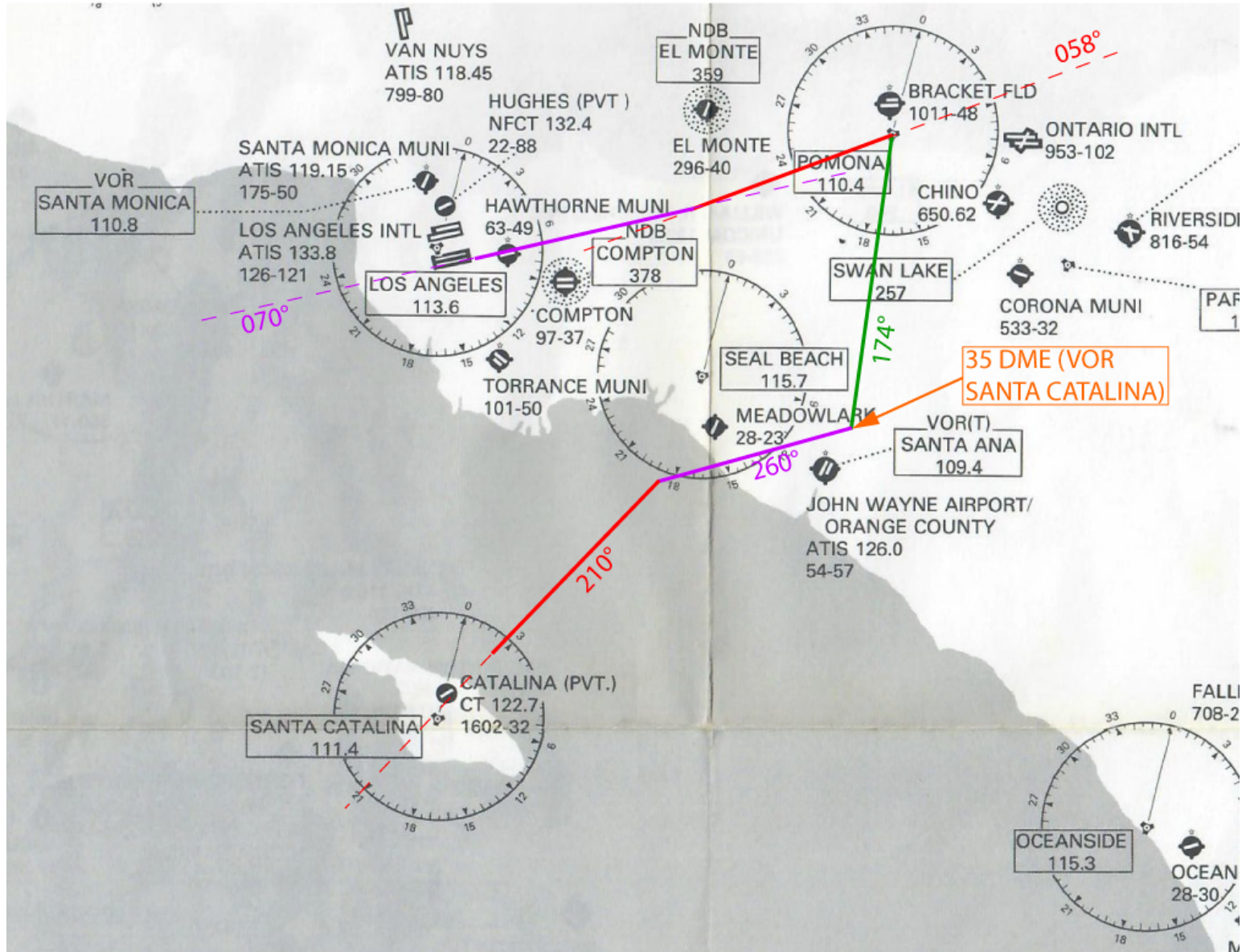


Correct heading



- Prepare aircraft: Start engine (CTRL+M,5) | Set trim for takeoff (5xV)

- Radio settings: COM=133.8 | NAV1+2=110.4 | VOR1=58 | VOR2=174



Flight description:

- Take off and climb to 5,000 feet, maintaining a runway heading of **070°** until you reach the **058° radial from VOR POMONA (110.4)**.

- Follow the 058° radial to 1 DME, then turn right and **pick up the outgoing 174° radial**.
(Use the display on the NAV2 for this)

- Now set VOR1 to 111.4 (VOR SANTA CATALINA) and NAV1 to 210. Keep an eye on the DME distance; at **35 DME**, turn right to a heading of **260°**.

- Maintain a heading of 260° until you intercept the **210° radial from VOR SANTA CATALINA**. Align with the 210° radial and descend to 3,000 feet at 20 DME. As soon as the airport comes into view, head for Runway 22.

